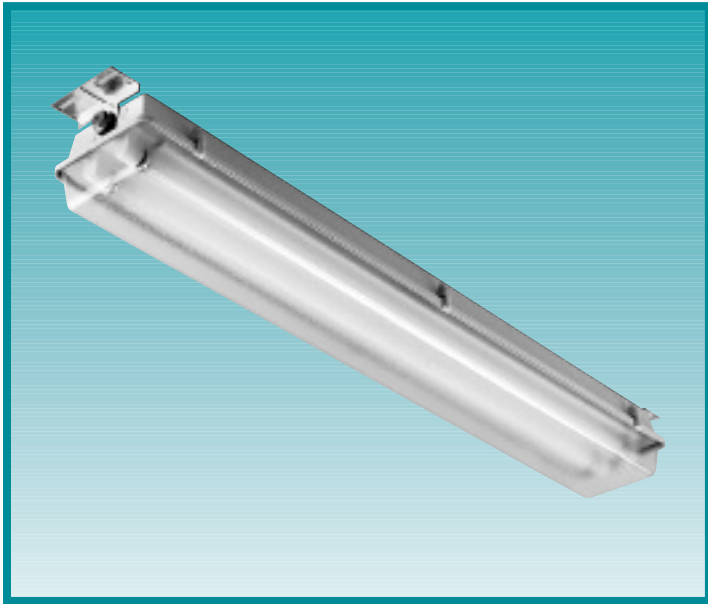


EG SERIES



Security Lighting's enclosed and gasketed fixture series provides the ultimate in combined quality lighting with resistance to corrosion, weather, dust and moisture. The fiberglass housing and acrylic lens ensure long lasting reliability and can be completely washed down. Ideal for carwashes, laundries, food plants, breweries, kitchens, and parking garages.

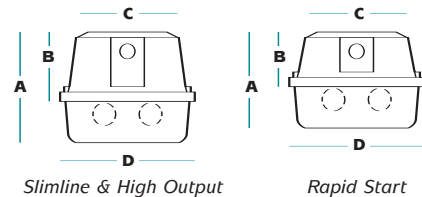


Fixture Specifications

FEATURES

- All units can be installed individually or in continuous rows
- Surface mount for use indoors or outdoors
- UL wet location listed
- Compressible closed-cell neoprene gasket bonded to housing for continuous tight seal
- Lens securely fastened with tension clamps
- Lens is high impact acrylic
- Fiberglass housing in white finish

DIMENSIONS



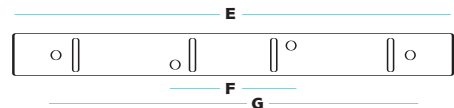
ORDERING INFORMATION

Catalog Number	# of Lamps	Temp		Ballast Type	Nominal Length
		T12	T8		
EG-240-EB	2	0°F		Electronic	52"
EG-240HO	2	-20°F		H.O. 800 MA	52"
EG-296HO	2	-20°F		H.O. 800 MA	102"
EG-232-EB	2		0°F	Electronic	52"
EG-432-EB	4		0°F	Electronic	102"

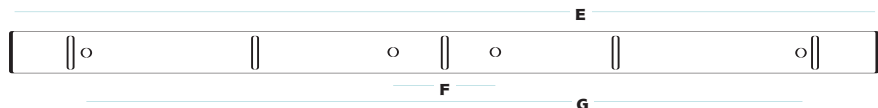
NOTE: • Fixture comes with 120V ballast. Consult factory for availability of other voltages.

A	B	C	D
SLIMLINE & HIGH OUTPUT			
5.625"	3.625"	5.125"	7.625"
RAPID START			
4.5"	2.5"	5.125"	7.625"

EG-240-EB



EG-296



E	F	G
EG-240-EB		
52"	14"	42"
EG-296		
102"	12"	84"



A HUBBELL LIGHTING, INC. COMPANY

Performance Designed Lighting Products

www.securitylighting.com

1085 Johnson Drive • Buffalo Grove, IL 60089 • TOLL-FREE: 800-544-4848 • PHONE: 847-279-0627 • FAX: 847-279-0642