

UCL LED Installation Instructions

Installed Location: _____

Installed by: _____ Date: __/__/__

WARNING: Improperly installed fixture can cause injury, shock, electrocution, and fire hazards. Install with qualified personnel to meet all applicable codes and ordinances. **Make sure power is OFF prior to installation.** Ground properly and use appropriate wire connectors. Input voltage must be matched to the appropriate ballast wire leads.

Note: When laying out the fixture locations, ensure there are no obstructions above. UCLLED mounting template aligns to the center of the canopy channel.

INSTALLATION

1. Place the installation template (provided) against the canopy at desired location and drill (4) 3/16" diameter holes. Trace the square opening in the template and cut out the 12" x 12" opening following the traced lines (see fig. "A").
2. Caulk (supplied by others) the underside of the retaining plate and then lay the fixture retaining plate on top of canopy and align with the cutout.
3. Lay a bead of caulk onto top side of Housing Flange (see fig. B).
4. Bring fixture to the underside of the canopy at the cutout and align the (4) flange holes to the drilled holes in the canopy. Attach fixture to the retaining plate using screws provided (see fig.

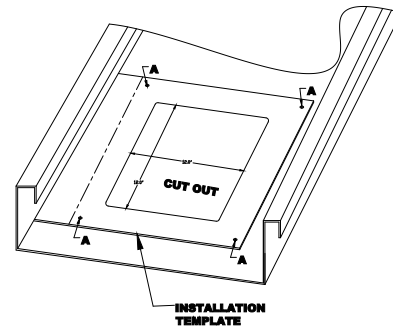


FIG. A

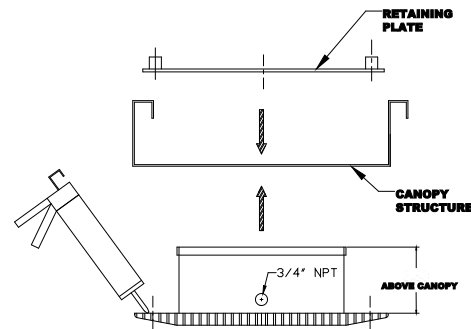


FIG. B

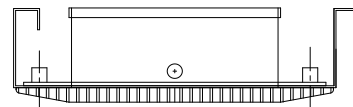


FIG. C



PERFORMANCE DESIGNED LIGHTING PRODUCTS
1085 JOHNSON DRIVE – BUFFALO GROVE, ILLINOIS 60089
800-544-4848