



## Recessed Square Accent Modules

# MLLPAR71 MLLPAR72

One or Two PAR-30  
LED GU24 base Lamps 15W  
Non-IC Rated  
120V

### HOUSING:

Prewired recessed housing, .050 aluminum powder coated matte black finish. Prewired J-Box with cover for easy below ceiling access. Thermally protected.

### TRIM:

Trim is offered in two versions: single or double. Painted aluminum trim surfaces feature durable powder coat finish in Zet (metallic silver) color. Contact factory for custom paint finish options.

### LAMP:

Use one, or two 15W GU-24 base PAR-30 LED lamps.

### SOCKET:

GU-24 base socket.

### INSTALLATION:

Adjustable universal mounting bracket. Accepts 1-1/2" lathing channel (by others). B-24 bar hanger available for T-Bar ceilings (order separately).

### LABELS:

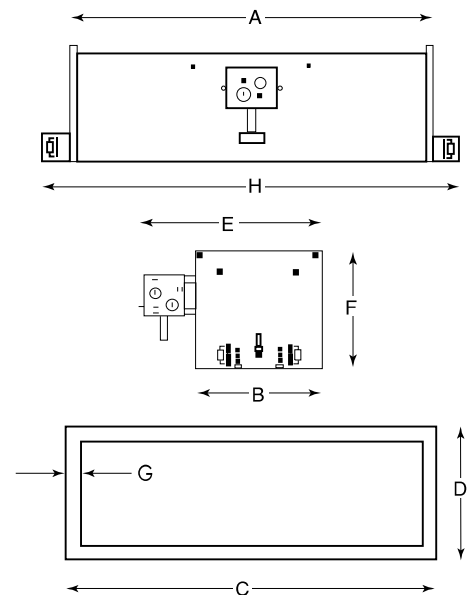
ETL, cETL



#### Dimensions

|   | 1 Lamp Fixture | 2 Lamp Fixture |
|---|----------------|----------------|
| A | 7.00"          | 14.0"          |
| B | 7.00"          | 7.00"          |
| C | 7.88"          | 14.88"         |
| D | 7.88"          | 7.88"          |
| E | 8.87"          | 8.87"          |
| F | 8.00"          | 8.00"          |
| G | 1.00"          | 1.00"          |
| H | 10.0"          | 17.0"          |

Ceiling Cutout: Dimension A x B  
Maximum Ceiling Thickness: 1 1/2"



CATALOG NUMBER:

EXAMPLE: MLLPAR71-TR1-B24-LED30GU24

#### HOUSINGS

**MLLPAR71**  
(1) Lamp

**MLLPAR72**  
(2) Lamps

#### TRIMS

**TR1**  
Trim (1 lamp), Zet

**TR2**  
Open trim (2 lamp),  
Zet

#### ACCESSORIES

**B24**  
Set of two (2) bar  
hangers for T-Bar

#### ACCESSORIES

**LED30GU24**  
LED PAR 30  
GU24 lamp

