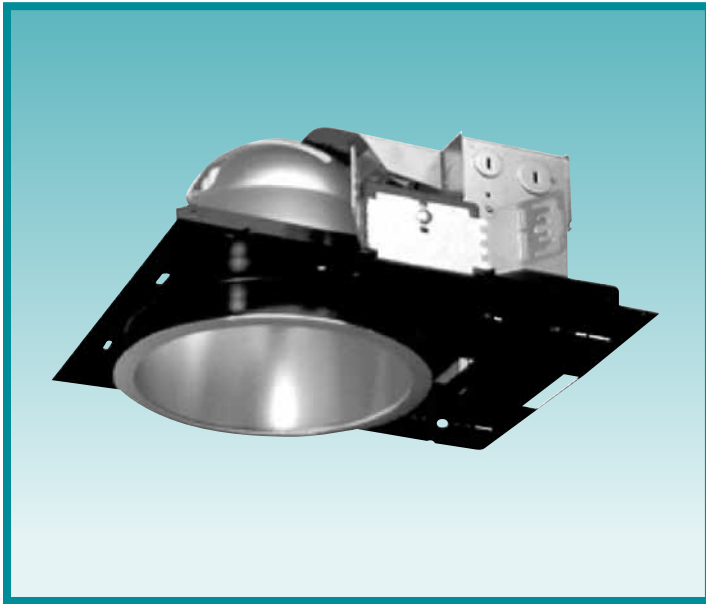


# 8" APERTURE COMPACT FLUORESCENT



## FEATURES

- Low brightness horizontal lamp housing
- Die cast aluminum plaster frame
- Ventilated socket housing
- Junction box rated for four #12AWG through branch circuits -90° wiring
- .050" thick high-purity aluminum reflector
- Maximum ceiling thickness 1.0"
- 25" hanger bars included, adjust 2.5"
- Class P ballast; sound rating: A
- Damp location listed
- Ships complete with lamp



## Fixture Specifications

### ORDERING INFORMATION

#### SAMPLE CATALOG NUMBER

**X**      **4**      **2**      **XXXXX**      **XXX**      **XXX**  
 Series    Aperture Size    #ofLamps    Lamp    Voltage    Options

SERIES	
<b>D</b>	Compact fluorescent quad-tube downlight
<b>W</b>	Compact fluorescent quad-tube wallwash <sup>1</sup>

APERTURE SIZE	
<b>4</b>	8" aperture

# OF LAMPS	
<b>2</b>	Two horizontal mounted compact fluores.

LAMP	
<b>13HPF</b>	13 watt quad tube (GX23-2) HPF magnet.
<b>13E</b>	13 watt quad tube (G24q-1) electronic
<b>18HPF</b>	18 watt quad tube (G24d-2) HPF magnet.
<b>18E</b>	18 watt quad tube (G24q-2) electronic
<b>26HPF</b>	26 watt quad tube (G24d-3) HPF magnet.
<b>26E</b>	26 watt quad tube (G24q-3) electronic

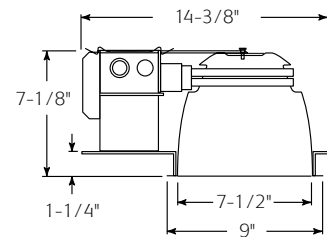
VOLTAGE	
<b>120</b>	120 volt
<b>277</b>	277 volt

OPTIONS	
<b>DIM</b>	Electronic dimming ballast
<b>EM</b>	Emergency battery pack

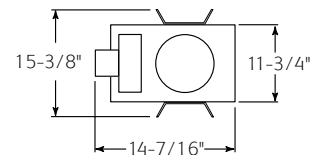
<sup>1</sup> Only for use with 4480W Trim

TRIMS (order separately)	
<b>4498W</b>	Low iridescent specular clear reflector, white trim ring
<b>4499W</b>	Specular gold reflector, white trim ring
<b>4351W</b>	White painted cone reflector
<b>4500W</b>	Low iridescent specular clear reflector with matte black baffle
<b>4460W</b>	White painted reflector with prismatic C73T glass lens & white splay trim
<b>4470W</b>	Low iridescent specular clear reflector, white trim ring and lens
<b>4480W</b>	Low iridescent specular clear wall wash reflector, white trim ring

### DIMENSIONS



Ceiling Cutout = 8-1/4"  
 Maximum Ceiling Thickness = 1-1/4"



4498W

4499W



4351W

4500W



4460W



4470W



4480W



A HUBBELL LIGHTING, INC. COMPANY

Performance Designed Lighting Products

www.securitylighting.com

1085 Johnson Drive • Buffalo Grove, IL 60089 • TOLL-FREE: 800-544-4848 • PHONE: 847-279-0627 • FAX: 847-279-0642